

SPECIFICATIONS

ENGINE

Model.....Cummins 6BT5.9C
 Type.....6 cylinder in-line water cooled
 Rated fly wheel power.....133 PS @ 2000 rpm
 Max.torque.....54.8 kgf-m @ 1300 rpm
 Batteries.....2 X 12 V

HYDRAULIC SYSTEM

Main pumps.....2 variable displacement axial piston pumps
 Max. oil flow.....2 X 221 lpm
 Pilot pump.....1 gear pump
 Max. oil flow.....20 lpm

SUPERSTRUCTURE

Swing speed.....13.7 rpm

RELIEF VALVE SETTINGS

Implement circuit.....285 kgf/cm²
 Swing circuit.....260 kgf/cm²
 Travel circuit.....350 kgf/cm²
 Pilot circuit.....40 kgf/cm²

UNDERCARRIAGE

Travel speeds.....0-4.2 kmph
 Max.traction force.....15,200 kgf
 Gradeability.....35° (70% continuous)
 No.of upper rollers.....2
 No. of lower rollers.....8
 No. of track shoes.....49
 Shoe width.....600 mm

SERVICE REFILL CAPACITIES

Hydraulic tank.....129.0 ltr
 Hydraulic system.....220.0 ltr
 Fuel tank.....315.0 ltr
 Engine coolant.....35.0 ltr
 Engine oil (Sump).....14.0 ltr
 Swing device.....6.7 ltr
 Travel device (Each side).....6.8 ltr

WEIGHTS AND GROUND PRESSURE

Machine	Operating weight	Ground pressure
EX215LCQ Backhoe	21,250 kg	0.44 kgf /cm ²

DIGGING FORCES

BACKHOE

Bucket digging forces.....11000 kgf

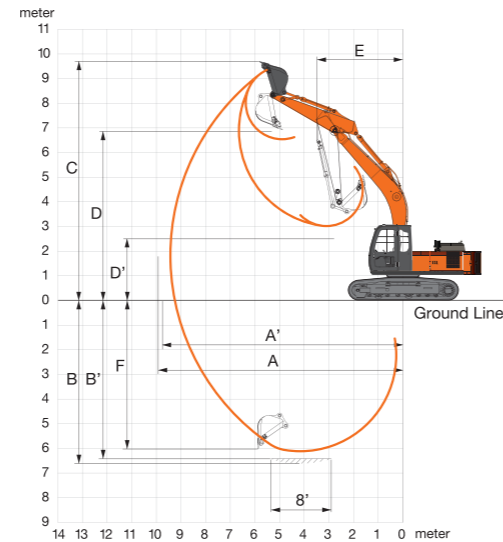
Arm length	2.22 m
Arm digging force	11300 kgf

BUCKETS

BACKHOE

Capacity	Width without side cutter	Weight (approx.)	Tooth points
0.91 m ³ (Quarry Re-handling)	1150 mm	765 kg	5
0.91 m ³ (General Purpose)	1150 mm	741 kg	5
1.0 m ³ (Sand)	1256 mm	805 kg	5

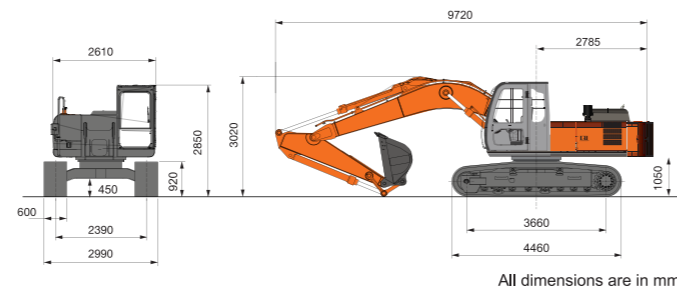
BACKHOE ATTACHMENT



WORKING RANGES

BACKHOE		
	Boom length	5680
	Arm length	2220
A	Max. digging reach	9250
A'	Max. digging reach (on ground)	9060
B	Max. digging depth	5910
B'	Max. digging depth (8' level)	5670
C	Max. cutting height	8990
D	Max. dumping height	6230
E	Min. swing radius	3720
F	Max.vertical wall depth	5050

DIMENSIONS



Tata Hitachi Construction Machinery Company Private Limited

Registered Office: Jubilee Building, 45 Museum Road, Bangalore, India 560025

Telephone: +91 80 6695 3301 / 02 / 03 / 04 / 05 | Toll Free : 1800 121 6633

Email: info@tatahitachi.co.in | Website: www.tatahitachi.co.in |

These specifications are subject to change without prior notice. The machine depicted may vary from the actual machine. Please contact our nearest office for latest specifications. Accessories shown here are not part of the standard equipment. Performance of the machine may vary with site and operating conditions encountered.

Authorised Dealership



TATA HITACHI

Reliable solutions

THE QUARRY SPECIALIST

EX215LCQ

SUPER SERIES QUARRY



Model
EX 215LCQ

Engine Power
133 PS @ 2000 rpm

Operating Weight
21,250 kg

Bucket Capacity
0.91 m³ - 1.0 m³

THE QUARRY SPECIALIST



Engineered for durability in quarry – reinforced HD boom and arm



Rock Breaker piping kit (optional)



Enhanced durability of bucket cylinder



Increased production with all new reinforced quarry bucket

0.91 m³ (QR)



0.91 m³ (GP)



1.0 m³ (Sand)



Fuel filling made safer and convenient with fuel filling pump



Monitor your machine from anywhere with InSite



Enhanced track life with robust track parts

- Shoe plate thickness increased by 25%
- 20% increased strength
- HD roller
- HD sprocket
- HD track link
- 600mm track



Excellent ergonomics and operator comfort

- FOPS (optional) for safer operations



Mainframe engineered for increased durability in quarry application



Hitachi's Optimum Hydraulic System (OHS) delivers

- Higher production
- Higher speed
- Low fuel consumption



Increased durability and stability for trouble free performance through all new large HD track frame